



## From the President

Am I the only one? When I return from Tucson, I've had an overload of minerals. After some cleaning, labeling and cataloguing I'm ready for a short break. First thing I know, summer is here. Time for a little travel, guests visiting, other projects, some field collecting—then the Denver show is looming. And I realize many of the enthusiastic ideas from Tucson to do more for FM remain unfulfilled.

We've had a good response to Gloria's excellent FM Newsletter, but we need short articles. Surely, there is some fascinating or unusual aspect of the hobby that you have always wanted to share with others, but felt

it was a little too much work to prepare an article for one of the magazines. Now is your chance! Just send your idea or draft to Gloria and she'll respond immediately with feedback.

We have discussed various ideas about increasing membership, either in "groups" through affiliation with other organizations or individually. As an organization, we still haven't done much on this front, although individuals just asking fellow collectors to join continues to work very well—but we all have to this if we want to see FM's membership start creeping back up. Nobody will check up on you, but why not make a resolution to get a new

member before the New Year, thus shortening that list.

You've probably noted the changing face of FM now in *The Mineralogical Record* and *Rocks & Minerals*; Sharleen Harvey is updating our space in those widely read journals. Also, don't forget to let us know, as requested now in your newsletters, if you prefer to receive them via e-mail, which may be more convenient for you and which saves FM postage costs.

As this is written, we're off to Denver. Hope to see many of you there!

Bill Dameron, President

### In this Issue:

Article—Pseudomorphs	2
FM Leadership	3
Chapter Reports & Symposia	2, 4, 5
Membership Application	6

## Denver Social



Be a Friend  
Bring a Friend

Join your fellow members in the small meeting room on **Aisle E** of the Denver Merchandise Mart on **Saturday, Sept 18** from **11 am to noon** for **Coffee, Donuts and Conversation!** It just won't be any fun without you!

## Board of Directors Meeting—Denver

There will be a *short* Board of Directors Meeting for Officers, Directors and Chapter Presidents that are in attendance at this

year's Denver show. We are hoping to have enough voting directors present for a quorum, so please plan to attend if you are in town.

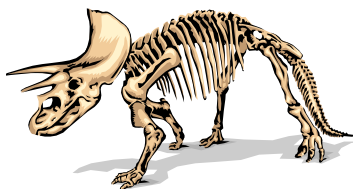


Your Opinion Counts  
Attend the Meeting

The meeting will be held on **Friday, September 17** at **11:00 am** in the small meeting room on **Aisle E** of the Merchandise Mart

## Article – Origin of the Term Pseudomorph by Si & Ann Frazier

The following is the initial installment of a series of articles on pseudomorphs that will appear from time to time on these pages. The authors maintain the article's copyright and should be contacted directly for reprint permission.



René Just Haüy coined the term pseudomorph, but he used it primarily to describe fossils.

The term pseudomorph (French = *la pseudomorphose*) was coined by René Just Haüy (1743-1822) in his epochal *Traité de Mineralogie* (1801, Vol. 1, 140). Haüy did not, however, use the term in its present sense. As part of a general discussion about types of concretions he coined the term from the Greek *pseudo* (false) and *morph* (form) for mineral bodies that owed their outward form to circumstances other than their

own unique powers of crystallization or formation.

Most of Haüy's discussion of pseudomorphs was devoted to fossils, especially fossil shells and petrified wood. He also includes at the end of the discussion, the comment "bodies which have a false and deceitful figure" which "present in a very remarkable manner foreign or strange forms which they have in some measure obtained from other bodies which had received them from nature (*ibid.*)."

After considerable discussion of what we would today classify as fossils, Haüy adds that "the mineral kingdom also has its pseudomorphoses. We find some substances of this kingdom under crystalline forms which are only borrowed; and it is probable that, in some cases at least, the new substance has been substituted gradually for that which has ceded its place to it as we suppose takes place with respect to petrified wood (*ibid.*)."

Haüy ends up by giving us a definition. After defining stalactites and incrustations as the two other forms of concretion Haüy wrote that "the pseudomorphoses is a concretion endowed with a form, foreign to its substance and for which it is indebted to its molecules filling a space formerly occupied by a body of the same form (*ibid.*)."

Other terms used in former times are *After-Kristalle* (F. J. A. Estner, 1794; Werner, as reported in 1811 by Hoffmann; and Breithaupt 1815) and *Supposititious* crystals (Jameson, 1816). It seems probable that Werner coined the term *After-Kristalle* and first recognized the phenomenon, even though Estner first used it in print. Estner was both a pupil and great admirer of Werner.

Abraham Gottlob Werner (1749-1817) was the most influential mineralogy teacher of his time. Students from all over the world flocked to the Royal Bergakademie at Freiberg in Saxony (Germany) to hear his lectures in mineralogy. Werner was a great scientist and a charismatic teacher, but he hated to write. As a consequence many of his ideas and discoveries were first published by his students.

*After-Kristalle* is generally conceded to be one of Werner's important ideas and he undoubtedly used it in his lectures, but our first encounter with it in print is in a rather obscure publication by one of his loyal students.

*After-Kristalle* obviously has precedence, but by the second half of the 19<sup>th</sup> century had been supplanted almost completely by the term pseudomorph. How this came to pass is an intriguing etymological mystery.

### PA Chapter Symposium

Pennsylvania FM Chapter  
is holding its  
**2004 FALL SYMPOSIUM**  
**Eastern Classic Locations (Part 1)**

on  
**November 6-7, 2004**

at the  
Delaware County Institute of Science  
11 Veterans Square in Media, PA

**Program**  
**Saturday, November 6**  
Speakers

Dr. Steven Chamberlain, Johnny Johnsson & Steve Okulewicz  
Lunch & General Meeting  
Regular and Silent Auctions

**Sun. November 7**  
Field Trips (open to FM members only)

For more information contact: Arnold Mogul, 15 Oak Rd., Schuylkill Haven, PA 17972; (570) 739-4034; pioche@losch.net

Register at the door or preregister before October 24, 2004  
by contacting John Ebner, P.O. Box 1169, Wall, NJ 07719-1169

## FM Leadership

### NATIONAL OFFICERS

<b>PRESIDENT:</b>	Bill Dameron, 1609 NW 79th Circle, Vancouver, WA 98665; baritebill@aol.com
<b>VICE PRESIDENT:</b>	Virgil Lueth, New Mexico Tech, 801 Leroy Place, Socorro, NM 87801; vwlueth@nmt.edu
<b>SECRETARY:</b>	Gloria Staebler, PO Box 263, East Hampton, CT 06424; gloria@lapisint.com
<b>TREASURER:</b>	Jim Hurlbut, 2240 South Adams St., Denver, CO 80210-4912; jfhu@vanion.com
<b>EDITOR:</b>	Gloria Staebler, PO Box 263, East Hampton, CT 06424; gloria@lapisint.com
<b>WEB SITE COMMITTEE CHAIRS:</b>	Mike & Darcy Howard; dhoward954@aol.com
<b>FM WEB ADDRESS:</b>	www.friendsofmineralogy.org

### NATIONAL FRIENDS OF MINERALOGY BOARD OF DIRECTORS

Term	<u>Expires</u>	<u>Name</u>	<u>email</u>	<u>Phone</u>
2005		Ray Grant	raycyn@cox.net	(602) 461-7008
		Sharleen Harvey	bill-sharleenharvey@worldnet.att.net	(503) 248-4194
		Jim McGlasson	mineralminer@hotmail.com	(520) 760-1501
		Nelson Shaffer	shaffern@indiana.edu	(812) 855-2687
		Gloria Staebler	gloria@lapisint.com	(860) 267-4644
2006		Susan Eriksson	serikssn@vt.edu	(540) 231-3703
		James F. Hurlbut	jfhu@vanion.com	(303) 279-7796
		Dan Kile	dekile@usgs.gov	
		Anthony J. Nikischer	info@excaliburmineral.com	(914) 739-1134
		Carol Smith	smith72@attglobal.net	(303) 466-5863
		Art Soregaroli	arockdoc@telus.net	(604) 731-8946
2007		Regina Aumente	raumente@aol.com	(303) 978-9926
		Bill Dameron	baritebill@aol.com	(260) 546-1267
		Virgil Lueth	vwlueth@nmt.edu	(505) 835-5140
		Bob Reynolds	bob.reynold@lsa-assoc.com	(909) 792-3548
		Andrew Sicree	sicree@geosc.psu.edu	(814) 865-6427
		William (Skip) Simmons	wsimmons@uno.edu	(504) 250-6791

### CHAPTER PRESIDENTS (ALSO BOARD MEMBERS) AND EX-OFFICIO MEMBERS

**COLORADO CHAPTER:** President, Pete Modreski, 3555 Miller St., Wheat Ridge, CO 80033, (303) 425-9549, pmodreski@usgs.gov  
V-P, Eunice York; Treasurer, Jim Hurlbut; Secretary, Ray Berry

**MIDWEST CHAPTER:** President, Nelson Shaffer, 530 Cabot Ct., Bloomington, IN 47408, (812) 339-6623, shaffern@indiana.edu  
website [www.indiana.edu/~minerals/index.htm](http://www.indiana.edu/~minerals/index.htm)

**PACIFIC NORTHWEST CHAPTER:** President, Aaron Wieting, 1841 NE 58th Ave., Portland, OR 97213 (503) 284-5361,  
pdxpounder@hotmail.com

**PENNSYLVANIA CHAPTER:** President, Arnold Mogel, 15 Oak Rd., Schuylkill Haven, PA 17972, (570) 739-4034, pioche@losch.net

**SOUTHERN CALIFORNIA CHAPTER:** President, Bob Reynolds, 220 South Buena Vista St., Redlands, CA 92373-5129, (909) 798-8570,  
Jreynolds@empirenet.com; Secretary, Jennifer Rohl, 212 Backs Lane, #C, Placentia, CA 92870; (714) 533-2221, rohl@earthlink.net  
website: [www.mineralsocal.org/scfm/welcome.htm](http://www.mineralsocal.org/scfm/welcome.htm)

**MISSISSIPPI VALLEY CHAPTER:** President, Mark Sherwood, P. O. Box 436, Oak Grove, MO 64075-0436, (816) 690-8226,  
msherwood@swbell.net; Ted and Carol Ferguson, 3912 Queen Ridge, Independence, MO 64055 (816) 478-6418,  
Tferg62953@msn.com

**SOUTHEAST CHAPTER:** President, Julian C. Gray, 524 Robin Lane, Marietta, GA 30067; (404) 651-2272, julian.gray@comcast.net  
website: [www.southeastfm.org](http://www.southeastfm.org)

**ROCKS & MINERALS MAGAZINE:** *ex-Officio*, Marie Huizing, rocksandminerals@fuse.net, (513) 574-7142

**MINERALOGICAL RECORD MAGAZINE:** *ex-Officio*, Wendell Wilson, minrec@earthlink.com, (520) 299-5274

**MINERALOGICAL SOCIETY OF AMERICA:** *ex-Officio*, Alex Speer, j\_a\_speer@minsocam.org, (202) 775-4344

Friends of Mineralogy, Inc. is affiliated with The *Mineralogical Record*, *Rocks & Minerals*, The Mineralogical Society of America and the American Geological Institute. Please forward newsletter corrections/changes to Gloria Staebler, newsletter editor, gloria@lapisint.com; (860) 267-1512

## Chapter News

### PNW Chapter Projects *reported by Aaron Wieting*



#### Pacific Northwest

**The ABC Project**  
Preparation of educational mineral displays for loan to schools. Displays are prepared and coordinated by Lorna Goebel.

#### Washington Locality Index Revision

Contact John Lindell at lindell4@aol.com or 425-

432-4939 to provide information on rare minerals and obscure localities.

#### Oregon Locality Index

Contact Aaron Wieting at pdxpounder@hotmail.com or 503-284-5361 to provide information on rare minerals and obscure localities.

### 30th Annual Symposium & Show *Minerals of Skarns*

Sept. 24-26, 2004

*Featured Speakers:*

- Peter Megaw
- Ray Grant
- Jeff Scovil
- Don Grybeck

### SE Chapter Report *by Julian Gray*



***We're  
on  
the Web!***

#### Southeast

The Southeast Chapter is moving along, thanks to many new faces who are contributing to the organization.

In July we launched our new webpage!

**[www.southeastfm.org](http://www.southeastfm.org)**

We have also restarted

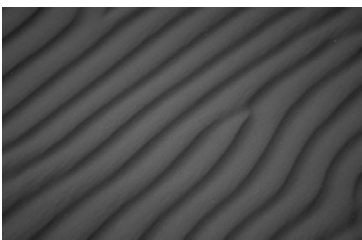
regular quarterly newsletters. Jose Santamaria, Director and Curator of the Weinman Mineral Museum, stepped forward to fill the position of vice president.

Our big event for the year is coming up: the Fall Symposium on November 13 and 14 in Cartersville, Georgia. We are still accepting talks!

Up to date chapter information can be found on our web page or by contacting SE Chapter president, Julian Gray.

Although we have made great progress in the last two years, we need even more involvement and recruiting, particularly from Virginia and the Carolinas.

### Southern California Chapter Report *by Jennifer Rohl*



The Mojave Desert is one hot collecting spot!

The Southern California Chapter held a mineral locality symposium at the Shoshone Museum. Over 30 people attended the event including FM members from Reno and Tucson. The speakers covered topics about the occurrence of talc in southern

Death Valley, new minerals from the Mojave Desert and the Basin and Range province, borax production in the Amargosa valley, Mojave turquoise and Mormon gold.

On Sunday, April 18<sup>th</sup> the members went on a field trip to look for trilobites in

the Emigrant Pass and opals in the Tecopa Opal Beds.

On October 23<sup>rd</sup> the SCFM will hold a symposium entitled, "Minerals from the Northern Peninsular Range Province" (see facing page for program schedule and details).

**Southern California Chapter of Friends of Mineralogy**  
*presents a*  
 Fall Mineral Locality Symposium  
***Minerals from the Northern Peninsular Range***  
***Province***

Symposium—Saturday, October 23, 2004  
 Field Trip—Sunday, October 24, 2004

Riverside Municipal Museum  
 3580 Mission Inn Avenue  
 Riverside, California

### Speaker Schedule

10:00 a.m.	Welcome	<i>James Bryant</i>
10:10 a.m.	Rock & Mineral Resources in Riverside County	<i>Dinah Shumway</i>
10:35 a.m.	History of Mining at Cajalco	<i>Dinah Shumway</i>
11:00 a.m.	Clintonite from Crestmore	<i>Curt Forrester</i>
11:30 a.m.	Hydrothermal Deposits in the Salton Trough	<i>Mike McKibben</i>
12:00 to 1:30	Lunch Break	<i>SCFM meeting</i>
1:30 p.m.	Recent Mineralogical Relationships between Pegmatites & Host Rocks in the Northern Peninsular Ridge	<i>Doug Morton</i>
2:00 p.m.	New Discoveries at the Fano mine, Little Cahuilla Mountain	<i>Ken Gochenour</i>
2:30 p.m.	Cryo Gene Pegmatite: Mineral Species Diversity	<i>Dana Gochenour</i>
3:00 p.m.	Field Trip Information	

Sunday's field trip will be to an active pegmatite mine in the northern peninsular ridge.  
 Contact the SCFM chapter for more information



Friends of Mineralogy  
2240 S. Adams St.  
Denver, CO 80210-4912  
RETURN SERVICE REQUESTED

**Notice! Dues are Due!**

Check your label. If your membership date is marked in RED this is the last issue you will receive unless you pay your 2004 dues.



**WE'RE ON THE WEB!**  
[WWW.FRIENDSOFCRYSTALS.ORG](http://WWW.FRIENDSOFCRYSTALS.ORG)

**Renew Your Membership and Signup a Friend**

**Friends of Mineralogy ❖ Application for Membership (or Renewal) / Member Data Sheet**

Last Name: \_\_\_\_\_ First Name: \_\_\_\_\_

Street Address: \_\_\_\_\_

City: \_\_\_\_\_ State/Province: \_\_\_\_\_

Country: \_\_\_\_\_ Zip/Postal Code \_\_\_\_\_

Telephone (home): \_\_\_\_\_ (office) \_\_\_\_\_

FAX (home): \_\_\_\_\_ (office) \_\_\_\_\_

Email address: \_\_\_\_\_ Chapter Affiliation Desired: \_\_\_\_\_

I prefer to receive my FM newsletters via (please check one) US mail \_\_\_\_\_ Email \_\_\_\_\_

Signature: \_\_\_\_\_ Date \_\_\_\_\_



**Do It with a Friend!**

Friends of Mineralogy, Inc., is composed of members of 7 local chapters, plus national members not affiliated with a chapter. **Prospective National Members should send their application and \$10.00/year dues to Jim Hurlbut, 2240 S. Adams St., Denver, CO 80210-4912. Phone 303-757-0283.** Prospective members of a chapter should submit form directly to the chapter contacts (Colorado, Midwest, Pacific NW, Miss. Valley, Southeast, Pennsylvania, or Southern California). You will be billed for your chapter dues, since they vary with individual chapters.