



# FRIENDS OF MINERALOGY NATIONAL NEWSLETTER

Volume 43, No.1

January 2013

*to promote, support, protect and expand the collection of mineral specimens and to further the recognition of the scientific, economic and aesthetic value of minerals and collecting mineral specimens.*

## Inside this issue:

President's message 2

Board election candidates 4

Denver meeting minutes 6

Tucson speakers 8

Local chapters' news 9

New Mexico Call for papers 16

From the AGI 18



## FRIENDS OF MINERALOGY GENERAL MEETING

Tuesday, February 12th, 4pm  
Hotel Tucson City Center, Tucson, Arizona

Members are encouraged to attend this general membership meeting and express yourselves on the direction and activities of Friends of Mineralogy. This is one of only two general membership meetings each year and is your chance to let the Board know your priorities. All ideas, criticisms, and new projects are open for discussion. New and perspective members are especially urged to participate.

## FM BOARD BUSINESS MEETING

Friday, February 15th, 7:30am  
Hotel Tucson City Center, Tucson, Arizona

Board members, including local Chapter presidents, are reminded to attend this meeting to conduct the business of the organization. New board members will be installed, officers voted upon, and general business taken up. This is the most important meeting of the year to present and act upon business on behalf of Friends of Mineralogy and attendance is critical.

## From the President

As we begin a new year, I would like to wish all of our members and their families continued health and happiness and as well as success in their mineral collecting activities. Tucson is just around the corner, and I hope to see many of you at our membership meeting at the Hotel Tucson City Center (formerly Inn Suites) at 4 pm on Tuesday, February 12. A social hour will follow the membership meeting. All FM members and prospective members are encouraged to attend and provide ideas to help make our organization as effective as possible.



We need your participation. The National Friends of Mineralogy organization, like most groups of this kind, relies solely on volunteers to serve as officers and directors, and to help out with other duties as the need arises. Many of our members who have served in these positions have done so for many years. This dedication is indeed appreciated but, while the time required to execute these duties is generally not significant, it is asking a lot to expect one to continue to carry on year after year as officers and directors. In the future we will need to add some new folks with fresh ideas to our board. The only requirements are that one be willing to put in a few hours a year on FM business, and be able to attend our annual board meeting during Tucson Show week. If you think you might like to become an active participant in this organization, please let me know.

Have a great holidays. See you soon.

**Allan Young, National Friends of Mineralogy President**



Allan receiving award from Bob Meyer. Photo by Al Liebetrau

Editors note: **The 2012 Noble Witt Award was presented by the Pacific Northwest Chapter Friends of Mineralogy to Allan Young** at the annual Symposium in October. This award is given for outstanding service to the goals and ideals of Friends of Mineralogy and is the PNW Chapter's highest honor.

**Congratulations, Allan**

## NATIONAL OFFICERS

**PRESIDENT:** Allan Young, 315 East Carter St., Boise, ID 83706; [allanyoung@msn.com](mailto:allanyoung@msn.com)  
**VICE PRESIDENT:** Gloria Staebler, PO Box 11613, Denver, CO 80211; [Gloria@lithographie.org](mailto:Gloria@lithographie.org)  
**SECRETARY:** Mark Mauthner, 1737 San Pablo Dr., San Marcos, CA 92078; [mmauthner@gmail.com](mailto:mmauthner@gmail.com)  
**TREASURER:** Carol Smith, 1731 Daphne St., Bloomfield, CO 80021; [smith72@comcast.net](mailto:smith72@comcast.net)

**PAST PRESIDENT:** Julian Gray, 524 robin Lane S.E., Marietta, GA 30067; [julian.gray@comcast.net](mailto:julian.gray@comcast.net)  
**WEBMASTER:** Jim Etzwiler, 19011 312<sup>th</sup> Ave NE, Duvall, WA 98019; [kd7bat@arri.net](mailto:kd7bat@arri.net)  
**NEWLETTER EDITOR:** John Lindell, 25714 268<sup>th</sup> Ave S.E., Ravensdale, WA 98051; [lindell4@aol.com](mailto:lindell4@aol.com)

## NATIONAL BOARD OF DIRECTORS

### Term expires 2013:

Julian Gray; [julian.gray@comcast.net](mailto:julian.gray@comcast.net)  
Virgil Lueth; [yvlueth@nmt.edu](mailto:yvlueth@nmt.edu)  
Regina Aumente; [RAumente@aol.com](mailto:RAumente@aol.com)  
Carol Smith; [smith72@comcast.net](mailto:smith72@comcast.net)

### Term expires 2014:

Allan Young; [allanyoung@msn.com](mailto:allanyoung@msn.com)  
Gloria Staebler; [gloria@lithographie.org](mailto:gloria@lithographie.org)  
Aaron Weiting; [pdxpounder@hotmail.com](mailto:pdxpounder@hotmail.com)  
Nelson Shaffer; [shaffern@indiana.edu](mailto:shaffern@indiana.edu)

### Term expires 2015:

Jim Etzwiler; [kd7bat@arri.net](mailto:kd7bat@arri.net)  
Mark Mauthner; [mmauthner@gmail.com](mailto:mmauthner@gmail.com)  
Sue Liebetrau; [liebetraum@msn.com](mailto:liebetraum@msn.com)  
John Lindell; [lindell4@aol.com](mailto:lindell4@aol.com)

## CHAPTER PRESIDENTS (ALSO BOARD MEMBERS)

**COLORADO CHAPTER:** Pete Modreski; [pmodreski@aol.com](mailto:pmodreski@aol.com)  
**MIDWEST CHAPTER:** Clyde Spencer; [c\\_spencer123@att.net](mailto:c_spencer123@att.net)  
**PACIFIC NORTHWEST CHAPTER:** Bob Meyer; [pyrite111@hotmail.com](mailto:pyrite111@hotmail.com)  
**PENNSYLVANIA CHAPTER:** Arnold Mogal; [pioche@verizon.net](mailto:pioche@verizon.net)  
**SOUTHERN CALIFORNIA CHAPTER:** Bob Reynolds; [rreynolds220@verizon.net](mailto:rreynolds220@verizon.net)  
**MISSISSIPPI VALLEY CHAPTER:** Larry Nuelle; [lnuelle@shawneelink.net](mailto:lnuelle@shawneelink.net)

## EX-OFFICIO BOARD MEMBERS

**ROCKS & MINERALS MAGAZINE:** Marie Huizing; [rocksandminerals@fuse.net](mailto:rocksandminerals@fuse.net)  
**MINERALOGICAL RECORD MAGAZINE:** Wendell Wilson; [minrecord@comcast.net](mailto:minrecord@comcast.net)  
**MINERALOGICAL SOCIETY OF AMERICA:** Alex Speer; [j\\_a\\_speer@minsocam.org](mailto:j_a_speer@minsocam.org)

## ELECTIONS TO SEAT FOUR NEW BOARD MEMBERS

Friends of Mineralogy's National Board of Directors is composed of twelve members elected by the general membership to serve three year terms plus the elected presidents of each local Chapter. Each year four Board positions open and are filled by vote of membership. A nominating committee chaired by Mark Mauthner has placed four candidates on the ballot to fill this year's vacancies.

### Nominated Candidates:

**Virgil W. Lueth** has been Mineralogist/Economic Geologist and Curator of the Mineral Museum at the New Mexico Bureau of Mines & Mineral Resources since 1994. He received his B.S. in geology at the University of Wisconsin - Eau Claire and graduate degrees (M.S. and Ph.D.) from the University of Texas at El Paso. Virgil has been long active in the mineralogical community, serving as advisor to student clubs in geology/mineralogy and participation with local clubs. He has served on the Board of Directors of the Society of Mineral Museum Professionals (1997 – current), New Mexico Geological Society (1999-2002), New Mexico Geological Society Foundation, Friends of Mineralogy (2000-current), adjunct curator at the New Mexico Museum of Natural History and Science (1994 – current), and as general chair of the New Mexico Mineral Symposium for the last 16 years. He was the recipient of the Honorary Award from the Rocky Mountain Federation of Mineral Societies in 1996 for his service to the mineralogical community. He has published over 50 articles in scientific journals, textbooks, and popular magazines, mainly in the fields of mineralogy, geochemistry, and economic geology. Dr. Lueth has also edited 10 award-winning guidebooks for the New Mexico Geological Society.

**Regina Aumente** has been on the board of Friends of Mineralogy for more than 20 years, and has served as Membership Coordinator in the distant past and recently as Treasurer for five years. She was actively involved in the Denver Gem & Mineral Show and several mineral clubs, as well as Colorado FM, for 25 years until she moved to the "wilds" of New Mexico. As Assistant Manager for Martin Zinn Expositions, she promotes the commercial side of the mineral hobby, but has also had a long and abiding interest in educating kids and the general public about minerals, fossils, and gems.

**Carol Smith** is former president of the Greater Denver Area Gem and Mineral Council. Her interest in minerals dates to 1976, when she met her husband Bill. They have collaborated on a number of magazine articles for *Rocks and Minerals* and *The Mineralogical Record*. She worked in local government as a computer programmer/analyst and has been involved in Democratic politics in Boulder County, Colorado. Carol is addicted to murder mysteries. Currently she is a volunteer for A Precious Child, a non-profit that benefits underprivileged families and children.

**Robert (Bob) Meyer** has been a member of Friends of Mineralogy and the Pacific Northwest Chapter of Friends of Mineralogy since 1984. He is the current and a past president of PNWFM, a member of the management group of Mindat.org, and a member of the Northwest Micro Mineral Study Group and the Fluorescent Mineral Society. Becoming interested in minerals at the age of 3, he has built a collection of about 12,000 specimens from world-wide localities, with a particular emphasis on specimens from the Western US, particularly those from his favorite locality, the Mammoth St. Anthony Mine at Tiger, Arizona. The mineral bobmeyerite from Tiger is named in his honor. He is a mineral photographer, particularly on the micro level, and has written a column featuring his photographs and philosophies entitled *The Micro Mineral Collector* for both the National and PNWFM newsletters. He holds a Bachelor of Science degree in Business, asserts that US based manufacturing is alive and well, likes demonstrating his culinary talents on friends, and that grin usually means he's thinking about minerals.



Please take the time to support Friends of Mineralogy by voting. You may vote for up to four positions from the nominated candidates or by writing in candidates of your choice who would be willing to serve. Ballot votes may be sent by e-mail to Mark Mauthner at [mmauthner@gmail.com](mailto:mmauthner@gmail.com) or by post to Mark Mauthner ,663 South Rancho Santa Fe Road, #615, San Marco, CA 92078. Ballots must be submitted before the Board meeting on February 15<sup>th</sup>.

### Ballot for Friends of Mineralogy Board of Directors—term 2013 –2016

Vote for up to four positions

☐ Regina Aumente

☐ Virgil Lueth

☐ Robert Meyer

☐ Carol Smith

☐ write in

☐ write in

☐ write in

☐ write in

---

**Dues due:** It's that time of year again when we beg, plead and cajole you to remit your dues for the coming year. National members please send your check for \$11 to the treasurer, Carol Smith, 1731 Daphne Street, Broomfield, CO 80020-1157 (mail: [smith72@comcast.net](mailto:smith72@comcast.net)). Chapters, please send your updated membership lists and dues payments as soon as possible. Your continuing support is needed so that we can afford to communicate with members, provide donations for Chapter symposia, offer awards at the Tucson show, and in other ways provide encouragement for mineral collectors.

---

### FM INFO OUTREACH BOOTH

Friends of Mineralogy each year has an informational booth in the mezzanine of the main convention center show in Tucson. Nelson Shaffer, who coordinates this, needs volunteers to help staff the FM outreach booth and materials to aid this effort. FM gives away hundreds of flyers, meeting announcements, mineral information sheets, and other FM related materials at the booth. Usually it also gives away small mineral samples when available, especially to the kids. If your chapter or you as an individual can provide any informational material or hand out specimens, please contact Nelson as soon as possible. Also let Nelson know if you can do an hour or two as a volunteer in the booth and schedule a time when you are available.

Nelson R. Shaffer, Ph.D.

Phone: 812-855-2687

Fax: 812-855-2862

[shaffern@indiana.edu](mailto:shaffern@indiana.edu)

## **Minutes of the Friends of Mineralogy Board Meeting, 3:30 pm 14-September-2012 Denver, Colorado**

### **Call to Order**

The semi-annual 2012 informal meeting of the Friends of Mineralogy Board of Directors was called to order at 3:33 pm by President Allan Young. Introductions were dispensed with as everyone knew everyone else at the meeting.

In attendance were Regina Aumente, Julian Gray, Bob Harmon, Sharleen Harvey, Mark Mauthner, Carol Smith, Dave Waisman, and Allan Young.

**No quorum was present so no formal business was conducted.**

### **Officer's Reports**

President:

Allan left his comments for the old business section of the meeting.

Secretary:

Secretary Mark Mauthner had nothing to report.

Treasurer:

Treasurer Carol Smith presented a brief treasurer's report. FM's bank account had a balance of \$8,800.90---about \$1000 more than last year---and the CD account a balance about \$1 more than last year. Carol also mentioned that she and Gloria still needed to go to the bank together to make Gloria a cosignatory on the account.

Allan added that he believes that the new agent, Bob Housely, has taken care of paperwork that needed to be filed relative to our 501c(3) status.

### **Committee Reports**

TGMS Symposium:

Julian Gray reported that he had five speakers signed up for the symposium on fluorite but needed three more to complete a full day session. He asked for ideas and/or contacts from the rest of the membership.

### **Chapter Reports**

Pacific Northwest:

Allan gave a brief summary of the Pacific Northwest's past and upcoming activities including the summer's Washington Pass cleanup (successful as always) and the annual symposium a little more than a month away. The symposium's theme this year is sulfate minerals and a slate of excellent speakers have been lined up.

Midwest:

Bob Harmon reported for the Midwest chapter. He could not report on the last meeting of the chapter as he was not able to attend but commented on two field trips the chapter organized: one to the Auglaize quarry was apparently less than successful but a second to Clay Center produced some finds of fine fluorite and celestine.

### Old Business

Allan Young praised John Lindell for his work on the newsletter but reiterated to the members that they need to provide John with content.

### New Business:

#### New Haven Club:

Allan was contacted by the New Haven Club regarding possible grants. He responded that the Friends of Mineralogy does not have a grant program but that it would financial support certain educational activities based on a letter of application for such funds. He has not heard back from the club.

#### Blue Cap Productions Project:

The FM Board was also approached by Bryan Swoboda of Blue Cap Productions regarding a supplement to the Mineralogical Record. This project, aimed at the young, is intended to produce educational material and incentive for young people to get involved in the mineral collecting hobby.

#### California Native Rock Park:

Allan also received a letter from Claudia Sherman in which she was asking for a letter of support to pitch an idea called "California Native Rock Park".

Meeting adjourned.

Submitted by Secretary, Mark Mauthner

---



**START THEM YOUNG**  
**Saul Weiting** at age 3.6  
looking for quartz xls  
Crystal Ridge, Inyo Co., CA  
Feb 2012  
photo by Jade Weiting

**34<sup>th</sup> Annual FM-TGMS-MSA Mineralogical Symposium**  
**Fluorite: Colors of the Rainbow**  
**10 am to 3:00 pm Saturday February 16, 2013**  
**Crystal Ballroom, Tucson Convention Center**

10:00 to 10:05 am	<b>Welcome and Introductory Remarks</b>	<b>Julian Gray</b>
10:05 to 10:30 am	<b>The Emerald green Fluorites and the Golden Calcites of the Malmberget Mine, Gällivare, Lappland, Sweden</b>	<b>Peter Lyckberg</b>
10:30 to 11:00 am	<b>Fluorite: A Favorite of Mineral Collectors</b>	<b>Arvid Pasto</b>
11:00 to 11:30 am	<b>Fluorite in Granitic Pegmatites</b>	<b>Mark Ivan Jacobson</b>
11:30 am to 12:00 pm	<b>New Mexico Fluorite – Over 10 million years of mineralization that continues today</b>	<b>Virgil W. Lueth</b>
12:00 to 1:30 pm	<b><i>Lunch Break</i></b>	
1:30 to 2:00 pm	<b>Fluorine and Fluorite in Mississippi Valley-Type (MVT) Deposits</b>	<b>John Rakovan</b>
2:00 to 2:30 pm	<b>The North Pennines Orefield, England – a Classic Fluorine-Enriched Mississippi Valley-Type Deposit</b>	<b>Jesse Fisher</b>
2:30 to 3:00 pm	<b>The Weardale Giant – a Large Fluorite Specimen Recovered from the Rogerley Mine, England in July 2012</b>	<b>Jesse Fisher</b>





## COLORADO CHAPTER, a recap of 2012:

At the monthly meetings this year, held at the Denver Museum of Nature and Science, presentations included:

Colorado Meteorites and the Oct. 5, 2004 Berthoud Meteorite, by Fred Olsen

An Update on the Smoky Hawk Amazonite Claim, by Joe Dorris

Crystallography, Color Centers and Thermoluminescence in certain Colorado Fluorites, by Bill Hutchinson and Jeff Self

Where Have All the [Best] Minerals Gone?, by Marty Zinn



Fred Olsen speaking emphatically about meteorites



Some of Joe Dorris' new Smoky Hawk Amazonite

The chapter's other activities included the annual Silent Auction in May, and sponsoring the Mineral Identification Booth at the Denver Show. Jeff Self and Donna Ware have been continuing to record interviews with Colorado miners in the San Juans and elsewhere as part of the chapter's Colorado Oral Mining History Project.

---

## PACIFIC NORTHWEST CHAPTER UPDATE

PNWFM held its 38<sup>th</sup> annual symposium last October in Kelso, Washington. The theme was "Sulfates" and the show featured outstanding talks and well presented displays. Our own "Barite Bill" Dameron, Les Presmyk of Arizona, Dick Dayvault of Colorado, and Alfredo Petrov, world citizen, headlined the speaker program. Talks were presented on a wide range of sulfate producing environments. Displays were presented in the chapter's new cases recently purchased from the Denver Show. Given that this was the first time chapter members had assembled the cases, set up went smoothly and they provided a new clean look to some excellent minerals displays.



Barite; 6.2 cm across. Dreamchaser Claim, Lane County, Oregon, USA. Bohemian Minerals specimen; Mark Mauthner photo



Photo by Al Liebetrau

Mineral dealers Rick Kennedy, Dennis Beals, John Meek and Jim and Yolanda McEwen anchored the main floor, providing specimens for purchase to a wide range of interests and budgets. In addition, dealers, field collectors, and mineral hobbyists occupied the entire north wing on the main floor of the motel selling rocks, sharing wine and beer, and spinning tall tales until the early hours of the morning. The Saturday evening banquet/ awards presentation/ auction was again the social highlight of the show. Food was good, bidding was vigorous, and the verbal barb exchanges between friends provided an

entertaining evening. Allan Young was honored with the Noble Witt Award, PNWFM's highest honor for his contributions to the goals and ideals of Friends of Mineralogy.

## MIDWEST CHAPTER NEWS

Partially taken directly from the Chapter newsletter

BOB HARMAN, chapter president will step down on January 1, 2013. CLYDE SPENCER will become the Midwest Chapter President on January 1 2013.

The November Midwest Chapter FoM meeting was held in conjunction with the Cleveland, Ohio Micromounters meeting. Janet Clifford chaired that meeting as she so graciously has done in the past. Our next chapter meeting will be in January 2013 at the Indiana State Museum. Clyde Spencer will chair that meeting and the program will be "behind the scenes at the museum" with curator Peggy Fisherkeller.

On November 17 the chapter had a field trip into Genoa Quarry in Ohio. About 17 members showed up under equitable collecting weather conditions. Collecting was described as "good" with abundant CELESTITE, CALCITE, and some FLUORITE and SPHALERITE found.

*Friends Of Mineralogy, Midwest Chpt January - February 2013 Page 3*

### GENOA COLLECTING GOOD

#### IF CLAY CENTER WAS A HOME RUN GENOA WAS A THREE BAGGER

FM took what is probably its last trip this year to Graymont Dolime of Genoa, Ohio on Saturday November 17, 2012. FM was able to muster 25 collectors to the trip. They were greeted by partly sunny skies and mild temperatures, and an even warmer host, Superintendent Gary Elliot.

New member Bill Barr of Ann Arbor Michigan worked for an hour to extract a prized sphalerite which was a crystal mass which was approximately two inches by one inch in diameter. White celestite was abundant everywhere with individual crystals up to 2.5 inches perched in mini-vugs. Also present in some pockets were scalenohedral honey calcite crystals, often with celestite.

FM member Alan Dewitt reported that he ended up pleased with Genoa, and that it was probably his best trip ever there, as he collected one nice sphalerite, a double cluster of rootbeer/clear zoned fluorite, a one inch sphalerite and a killer gastropod.

Gary Elliot's assistant, Harry, found and showed me a really nice beef heart clam. Incoming FM President Clyde Spencer (Dayton) found sphalerite in the quarry, and Tom Bolka (Dayton) found a six inch blade of celestite.

After FM field trips, if you would like to contribute what you have found to the FM newsletter, please do so. We are always interested in what members find on these trips.

Also, for next year, I would hope to "hold serve" on our present quarries. The field trips we attended this year (with attendance figures in parentheses) were: (1) Stoneco - Auglaize in Junction, OH (25); (2) Hanson of Salem, IN (8); (3) Great Lakes Aggregates of South Rockwood, MI (37); (4) Stoneco of Clay Center, OH (27); and (5) Genoa, OH (25).

Collecting in these quarries was excellent in Clay Center, very good in Genoa, and sub par in the other three quarries. We are always looking for new quarries, especially in Indiana, Michigan and Kentucky to give our members in those states a shorter drive to field trips. If you live in those states and you know of a good mineral quarry which will accommodate a FM trip, please let me know.

Many thanks.

Reggie Rose

FM Field Trips



Hi Reggie, I'm not a very good writer, so I'm sending some pics and will describe each one some, you'll have to be the author.

pic 1 believe to be an ammonite, maybe a gastropod, 1 1/4"

Collected by Robert Dewitt



The sphalerite crystal group shown took over an hour to remove from a hard-to-access position on a boulder. Overall size is 75 x 55 x 33 mm; largest crystal is 22 mm long. It fluoresces dim orange with green spots under shortwave UV (best on broken surface, i.e. the backside). The green spots phosphoresce for quite a while before fading.

Collected by Bill Barr, Ann Arbor, MI



### NEXT MEETING

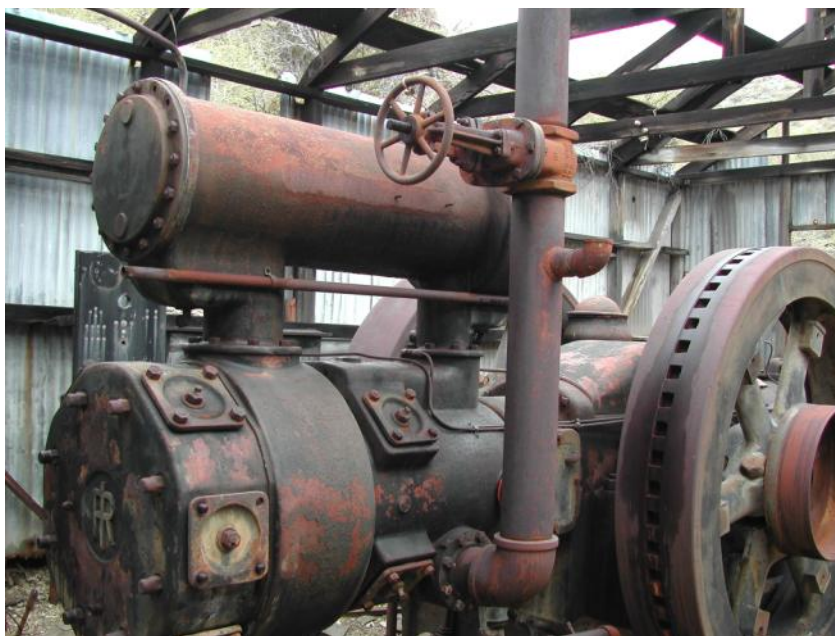
Our next meeting will be on Saturday, January 12, 2013 at 12:30 PM at the Indiana State Museum, 650 W Washington, Indianapolis, IN 46222. Program will be a "behind the scenes" tour of the museum to see items not on display to the public and where exhibits are prepared.



FLUORITE

CLEAR CRYSTALS IN VIEW - BROWN ON REVERSE

Collected by Robert Dewitt at Genoa



'79 Mine, Arizona. Photo by John Lindell



# SCFM *Notes*

Southern California Chapter, Friends of Mineralogy • January 2013

SCFM's annual Fall Symposium, October 20 and 21, 2012, convened at the Palm Desert Campus of California State University, San Bernardino. Five speakers presented lectures on Saturday:

- Bruce Bridenbecker (Types of Iron Deposits: Example: Iron Hat Mine, Cadiz);
- Doug Shumway (Bessemer Iron Mine, Johnson Valley: a history);
- Kim Bishop (Southern Avawatz Iron Replacement Deposits);
- Dinah Shumway (Eagle Mountain Iron Mine: The Deposit and its History); and,
- Bob Reynolds (Iron Replacement Deposits north of Bouse, Arizona), enroute on the Sunday field trip.



Participants prepare to examine the massive Eagle Mountain Mine dumps directly ahead.



Bob Pedersen and Larry Vredenburg prepare to winch in a large specimen.

The group left Palm Desert Saturday afternoon for the Eagle Mountain Mine. After collecting samples from the dump, we established an overnight camp east of Parker, Arizona.

On Sunday, joined by Bob Pedersen who described unusual minerals found in local iron deposits, we decamped for the mine dumps of the Standard #1 mine and the Iron King mine. Mine dumps of the Standard #1 (aka the BBC mine) produced both hematite blades and specular hematite, martite after magnetite, epidote, chlorite, amphibole, and copper oxides. The Iron King dumps contained hematite crystals interbladed with barite, and colorful micro pseudomorphs of chrysocolla after malachite.

Our collecting activities did not allow us time to visit the historic Swansea Mine and Mill, noted for cuprous hematite. This mine is to the east and historic structures have been partially stabilized, and a campground provided by the BLM.



Gregg Wilkerson, happy with the large hematite specimen for ballast.



Flora of the Sonoran Desert: Saguaro, Ocotillo, Ironwood & Palo Verde



View from the Iron King Mine north toward the Bill Williams River



## PENNSYLVANIA CHAPTER NEWS

Taken directly from the Chapter newsletter

2

FM-PA NEWSLETTER VOL 40, No. 4

WINTER 2012

### 2012 Symposium:

#### Selected Topics on Pennsylvania Mineralogy and Geology



Friends of Mineralogy - Pennsylvania Chapter members and guests convened at Franklin & Marshall College in Lancaster on Saturday, November 3, 2012, for the annual Symposium.

Dr. Stan Mertzman, our host and Department Head of Earth and Environment at F & M, welcomed those attending and gave a brief orientation.

Chapter President Arnold Mogel began the symposium and announced some schedule updates. The authors scheduled to make a presentation on Cornwall Mines were unable to attend. The schedule was rearranged with extra time for lunch and visits to the silent auctions, mineral dealers and displays down the hall.



Ron Sloto presented a wide-ranging talk on The Marcellus and Utica Gas Plays in Pennsylvania, covering the history of gas drilling in the Appalachians, gas and non-gas liquid reserves, and the horizontal drilling and hydraulic fracturing which are the key to the current production of "tight" gas reserves in the Marcellus shale and deeper Utica formations.

Dr. Lee Ann Srogi of West Chester University spoke on The Morgantown Sheet: Tectonics, mineralogy, and geology of a rock resource. This early Jurassic intrusive in a failed rift valley includes the diabase at Dyer Quarry, our field trip site. Collectible minerals there and elsewhere in the area were noted.



Bill Kochanov's topic was Occurrence of tosubite and associated sulfide minerals in the Anthracite Fields of Pennsylvania. The blue clay mineral is found in quartz-pebble conglomerate, and in fractures in sandstone along with quartz crystals; it is primarily hydrothermal but possibly also diagenetic. It may also be found with sphalerite in quartz veins.

Dr. Howell Bosbyshell of West Chester University spoke on The age of detrital zircon from the Wissahickon Schist and Gneiss, southeast Pennsylvania and Northern Delaware: Implications for regional tectonic history. He included updates on nomenclature of parts of the Wissahickon and related formations.



Photos by D. Glick  
except as noted.



3

FM-PA NEWSLETTER VOL 40, No. 4

WINTER 2012

Arnold Mogel displayed part of a "Cornwall Reference Collection," assembled by Mining Engineer Milt Leet and Professor Art Montgomery while the Cornwall Mine was still active.

On Sunday, participants met at the Dyer Quarry, Birdsboro, Pa., a well-known collecting locality now owned by James J. Anderson Construction Company, Inc. Calcite, chabazite, riebeckite, and opal were among the minerals found.



Chabazite and calcite, 35 mm across.  
*Ed Echler photo and specimen.*



The group gathers before entering Dyer Quarry.

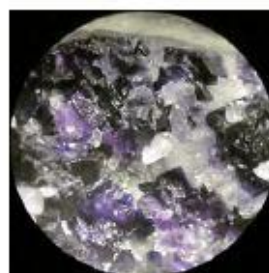


Brilliant blue opal at Dyer, still wet a few minutes after being exposed by cracking a boulder. Approximately life size, 4 inches (100 mm) across.

### AG Kurtz Quarry Field Trip November 10, 2102

A week after the symposium, FM-Pa members met at the A.G. Kurtz Quarry near Denver, Pa., now owned by Martin Limestone. The company is testing a new program of hosting collecting groups; our visit was made possible by two employees who volunteered to spend the morning with the group in the quarry.

Delaware Mineralogical Society's web site has a review by Bob Asreen of the quarry and its minerals: <http://www.delminisociety.net/kurtz.htm>



Fluorite crystals from A.G. Kurtz Quarry, each approx. 1.5mm across.  
*Ed Echler photo and specimen.*



180-degree panorama in A.G. Kurtz Quarry, Denver, P.A.

*D. Glick photos and digital editing.*

**CALL FOR PAPERS**  
**34<sup>th</sup> Annual New Mexico Mineral Symposium**  
**November 9-10, 2013**  
**Socorro, New Mexico**

The New Mexico Mineral Symposium provides a forum for both professionals and amateurs interested in mineralogy. The meeting allows all to share their cumulative knowledge of mineral occurrences and provides stimulus for mineralogical studies and new mineral discoveries. In addition, the informal atmosphere allows for intimate discussions among all interested in mineralogy and associated fields.

This year's symposium will consist of a day and a half of formal papers presented in 30-minute time blocks. Papers will focus on mineral occurrences from New Mexico and adjacent states, as well as Mexico. A few selected papers may be presented from other parts of the world. An informal pre-symposium social and tailgating session will be held at local motels beginning on Friday, November 8, 2013 and will last through the weekend. No formal field trips are planned.

A silent auction, sponsored by the Albuquerque Gem and Mineral Club for the benefit of the Mineral Museum, will be held on Sunday afternoon, November 10. The auction will be open to the public and all interested may buy or sell. All sellers pay a modest fee to the club to benefit the symposium and Mineral Museum. More information will be available at the symposium.

**CALL FOR PAPERS**

Papers on mineral occurrences in New Mexico and adjacent states (including Mexico) are invited for 30-minute presentations. All papers on the history of collecting, geology, and geochemistry of mineral occurrences, new mineral localities, and mineralogical research will be considered.

Titles of papers must be submitted by July 15, 2013, to be included in the final announcement and program. Abstracts must be submitted no later than September 15, 2013. Abstracts can be no longer than 1,000 words. Electronic submissions are encouraged, via e-mail or on standard electronic storage media. Hard copy versions are also accepted if sent in a timely manner.

*Please submit titles and abstracts to:*

***Dr. Virgil W. Lueth***

*New Mexico Bureau of Geology and Mineral Resources*

*New Mexico Tech*

*801 Leroy Place*

*Socorro, NM 87801*

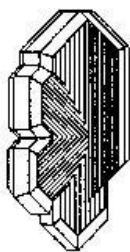
*[vlueth@nmt.edu](mailto:vlueth@nmt.edu)*

*575.835.5140*





Quartz (amethyst) with fluorapatite druse coating; 16.2 cm tall.  
Four Peaks, Mazatzal Mountains, Maricopa County Arizona, USA.  
San Diego Natural History Museum specimen (#6071); Mark Mauthner photo



## 40th Rochester Mineralogical Symposium

April 18-21, 2013

Radisson Hotel Rochester Airport at 175 Jefferson Road Rochester, NY 14623

Save the Date.

## This week from the AGI:

### EARTH: Superquakes, Supercycles, and Global Earthquake Clustering

Alexandria, VA The size and type of earthquakes a given fault system may produce remain poorly understood for most major fault systems. Recent superquakes, such as the March 2011 magnitude-9 off Japan and the December 2004 magnitude-9-plus off Sumatra, have been far larger than what most scientists expected those faults to produce. The problem is that current models rely on short historical records, and even shorter instrumental records. Today, scientists are working to rewrite these models based on new paleoseismic and paleotsunami data to create a more comprehensive picture of earthquake activity through time. What they're finding might alarm you.

With short records almost every significant earthquake is "new" to geologists. However, as more data are accumulated, we are beginning to see a more complex record of global strain cycles that may help to predict earthquake behavior in the future. In the January issue of EARTH Magazine, scientists looked at long-term cycling in the northeast Japan Trench and the paleoseismic record in the Cascadia Subduction Zone to try and piece together a clearer picture of earthquake activity in those regions. What will these new data tell us about future earthquakes? Read the story online and find out at <http://bit.ly/UyyycOp>.

Make sure to check out this story and more in the January issue of EARTH Magazine available online now. Learn how long-lost letters shed new light on 19th century Bone Wars; discover how volcanic bubbles build to a burp or a boom; and see how a new map shows Australia's true mineral potential all in this month's issue of EARTH.

\*\*\*

Keep up to date with the latest happenings in Earth, energy and environment news with EARTH magazine online at <http://www.earthmagazine.org/>. Published by the American Geosciences Institute, EARTH is your source for the science behind the headlines.





## Suspects arrested in Mariposa museum gold heist.

Taken from the "Los Angeles Times", Nov 14, 2012



Four men suspected in the heist of more than \$1 million in gold and gems from the California State Mining and Minerals Museum in Mariposa have been arrested, investigators said, adding that more arrests were possible.

Men dressed as ninjas and armed with pick-axes broke into the Sierra foothill museum Sept. 28, in broad daylight, and herded two employees into a far room before smashing display cases.

But the thieves failed to get away with the facility's most prized possession: The Fricot nugget, nearly 14 pounds of crystalline gold believed to be the largest nugget to survive the California Gold Rush. The intruders triggered an alarm system, which automatically closed the doors to the nugget's vault. But they dove out of the vault in time and escaped the museum with other artifacts.

A spokesman for the California Highway Patrol -- the lead agency investigating the state museum break-in -- said some of the stolen gold with quartz had been recovered.

---

## FM AFFILIATES



The Friends of Mineralogy is a long-time affiliate of *The Mineralogical Record* magazine. The magazine was founded in 1970 by John White, who was at that time a curator in the Mineral Sciences Department of the Smithsonian Institution. With the initial help of a financial backer, Arthur Montgomery, White succeeded in launching and bootstrapping the fledgling publication to the point where it was marginally self-sustaining. After seven years as editor and publisher, White stepped aside for a new Editor, Wendell Wilson. Since then the *Mineralogical Record* has grown steadily in size, quality and prominence, thanks to the contributions of over 700 authors, photographers, artists, advertisers and donors. It has become a collective labor of love on the part of the entire mineralogical community worldwide. It is the only journal to have a new mineral species named in its honor (minrecordite), and it is the only journal to have received the Carnegie Mineralogical Award. Subscriptions, back issues, books and a variety of free databases are available online at [www.MineralogicalRecord.com](http://www.MineralogicalRecord.com).

**ROCKS & MINERALS**

For Everyone Interested in Minerals, Rocks & Fossils  
[www.rocksandminerals.org](http://www.rocksandminerals.org)



### MINERALOGICAL SOCIETY OF AMERICA

If you are interested in earth, planetary, industrial, or biologic minerals or mineral-like materials, you may want to learn about the Mineralogical Society of America



3635 Concorde Pkwy Ste 500  
 Chantilly VA 20151-1110 USA  
 phone: +1 (703) 652-9950  
 fax: +1 (703) 652-9951  
 website: [www.minisocam.org](http://www.minisocam.org)





Gold; 2.6 cm tall. Irish Gulch,  
Klondike River Drainage, Dawson City, Dawson Mining District, Yukon Territory, Canada.  
Private collection; Mark Mauthner photo.